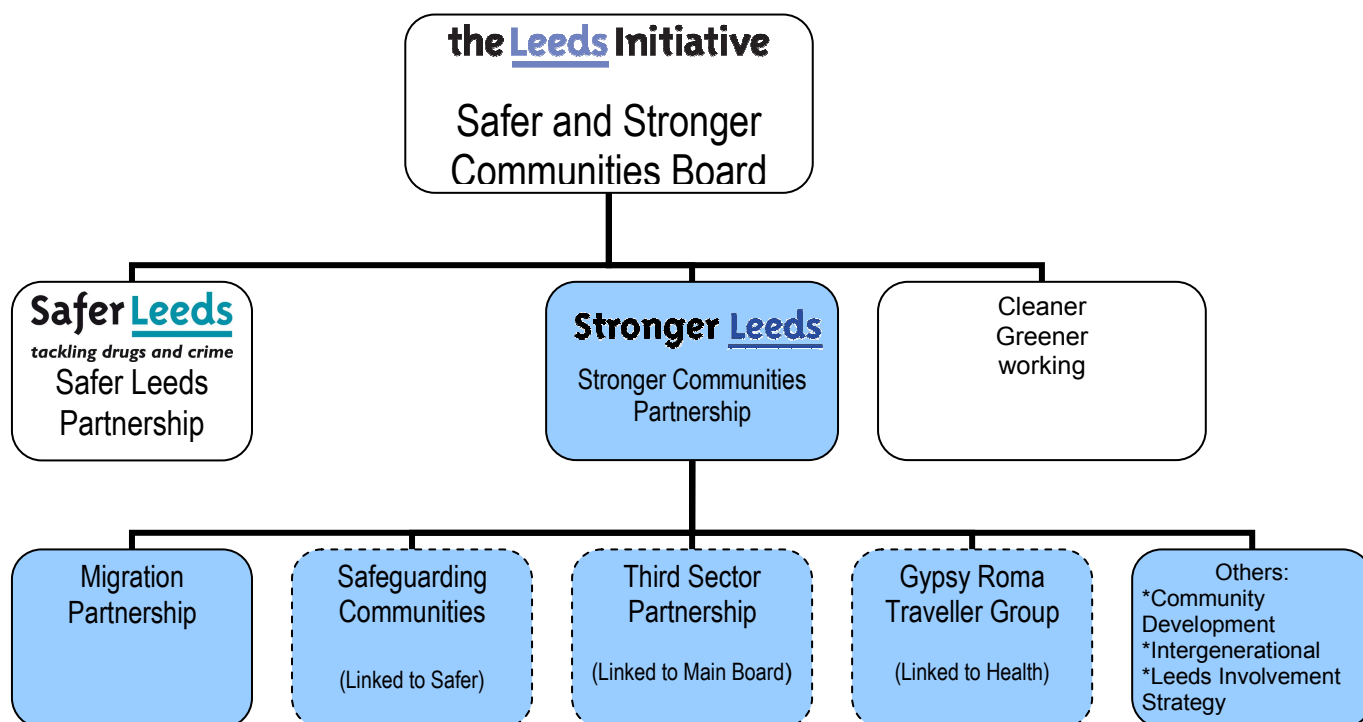


Safer and Stronger Communities Board 2011 – 2015.
 Priorities and planned work areas - 2012 Update



Safer and Stronger Communities Board priorities:

The Safer and Stronger Communities Board have agreed that at each partnership meeting there should be 1 substantive item (that draws together the different elements of the safer and stronger communities agenda) 1 item alternately from each of the sub-board areas of work namely: Safer, Stronger and Cleaner-Greener, 1 update alternately from each of the other 4 strategic partnership boards (to identify areas of cross-board working or interest) and the assessment of each of the 4 scorecards relating to Safer and Stronger Communities.

The 4 priorities for 2012 for the Safer and Stronger Board substantive item have been identified as:

- Restorative Approaches,
- Impact of Welfare Reform on Communities
- Localities and Localism
- Safeguarding Communities

Safer Leeds Partnership priorities:

- Reduce crime and its impact across Leeds
 - o Reducing the levels of domestic burglary
 - o Reducing the levels of violent crime
 - o Reducing the risks of offending and re-offending
- Effectively tackling anti-social behaviour in communities
 - o Establishing the city wide picture of anti-social behaviour
- Improving safeguarding and reducing vulnerability
 - o Domestic violence
 - o Hate crime and community tension
 - o Preventing violent extremism

Stronger Leeds Partnership priorities:

- Improve local engagement with and by communities
 - o Availability of community support and capacity building
 - o Improved access to resources locally and externally
- Improved co-ordination for supporting communities
 - o Improved community and neighbourhood intelligence
 - o Understanding of targeted interventions
- Third sector involvement in local communities
 - o Involvement strategy on participation, volunteering and giving
 - o Third sector partnership
- Improved relations with designated communities
 - o BME communities
 - o Faith communities
 - o Migrant/ Newly established communities
 - o Gypsy/ Roma/ Traveller communities
 - o Capacity for understanding/ delivering good relations